

# PIERCE



## PIERCE

This home blends tradition with technology. On the main level, a sizable gourmet kitchen features glass block back splashes for added light, as well as a large island. Two fireplaces, in the great room and main-floor master bedroom, lend a warm and welcoming glow. The master bathroom features a large walk-in closet and five-piece bath — including a large whirlpool tub and other spa-like features. And for today's family, a designated computer room is wired for internet use. The second level offers three bedrooms with walk-in closets, two baths — one private and one Jack and Jill, and a great room overlook.



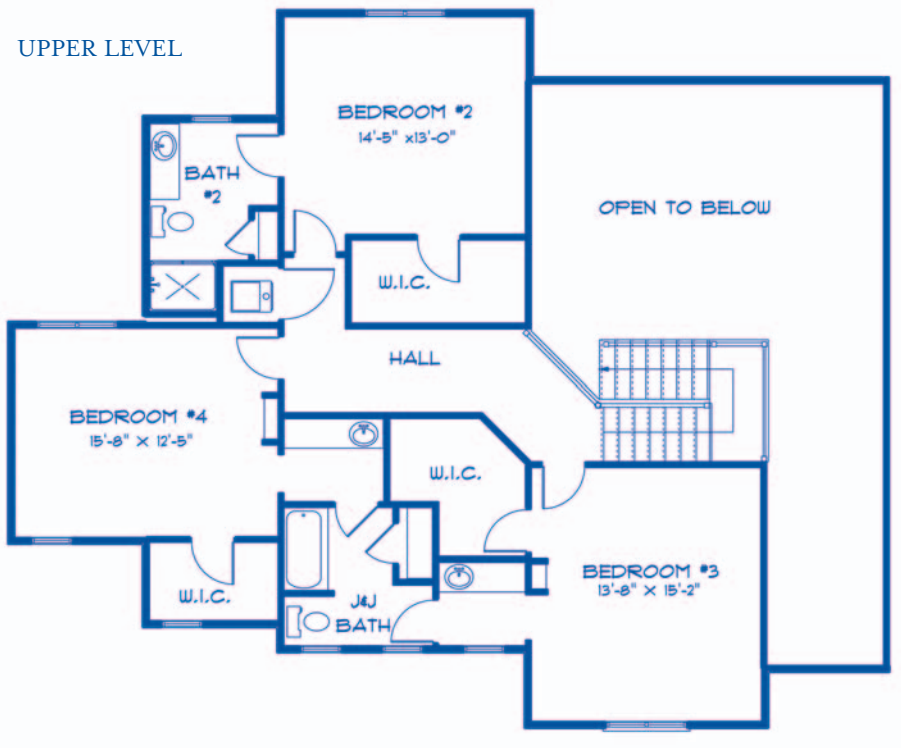
**COLORADO**  
**CUSTOM HOMES**

1204 WEST ASH ST • STE I  
WINDSOR, CO 80550

PH: 970.674.0200  
FAX: 970.674.0402

[www.cocustomhomes.com](http://www.cocustomhomes.com)  
A division of TschetCo Inc.

UPPER LEVEL




# PIERCE

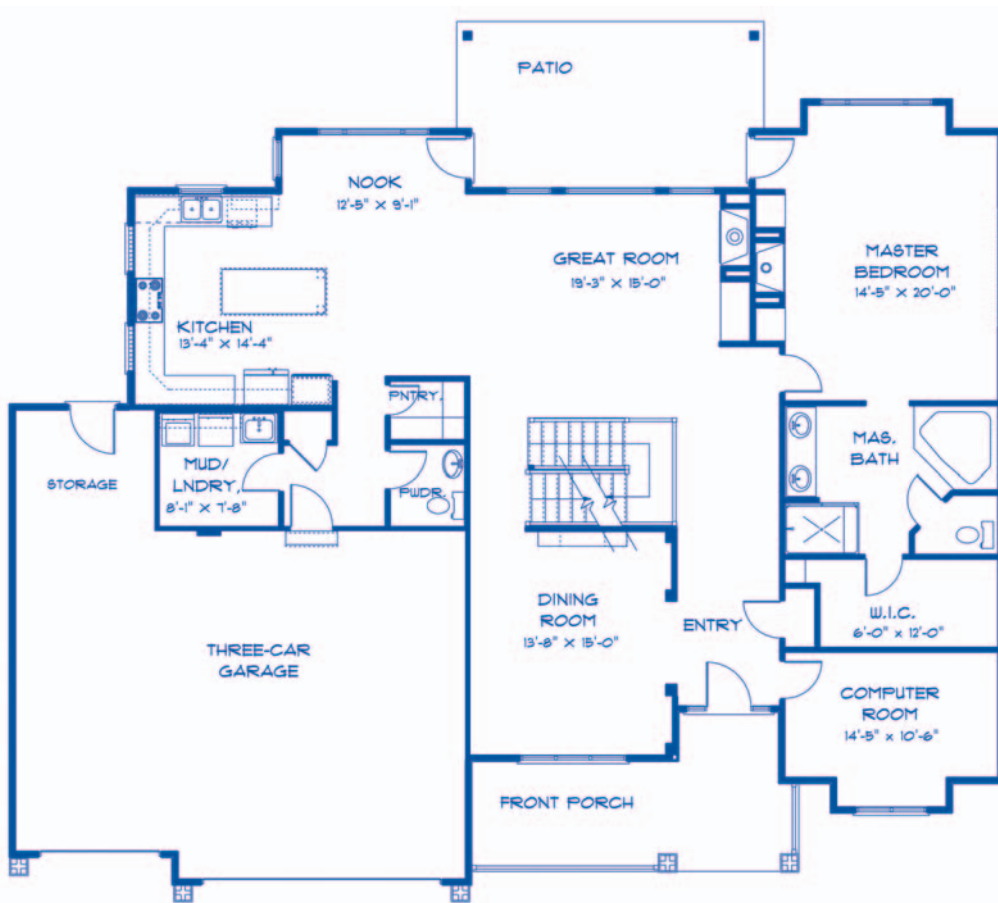
## Square Footage:

- MAIN LEVEL: 2,079 sq ft
- UPPER LEVEL: 1,173 sq ft
- LOWER LEVEL: 2,055 sq ft (unfinished)  
111 sq ft (finished)

## Distinctive Select Choices:

- PREFERRED ENERGY STAR BUILDER 
- ANDERSEN NEW LOW-E4 HIGH PERFORMANCE WINDOWS
- 90% EFFICIENT FURNACES AND CENTRAL AIR
- PERSONALIZED CHOICES OF AN EXTENSIVE ASSORTMENT OF HARDWOOD, TILE, AND GRANITE FINISHES
- DISTINCTIVE ARCHITECTURAL DESIGN
- INDUSTRY LEADING CONSTRUCTION TECHNIQUES
- OUR STANDARDS FAR EXCEED OTHER BUILDERS' UPGRADES

*Specification subject to change without notice. Please see our Standard Features insert for a complete list of features. Square footage is approximate.*



MAIN LEVEL